



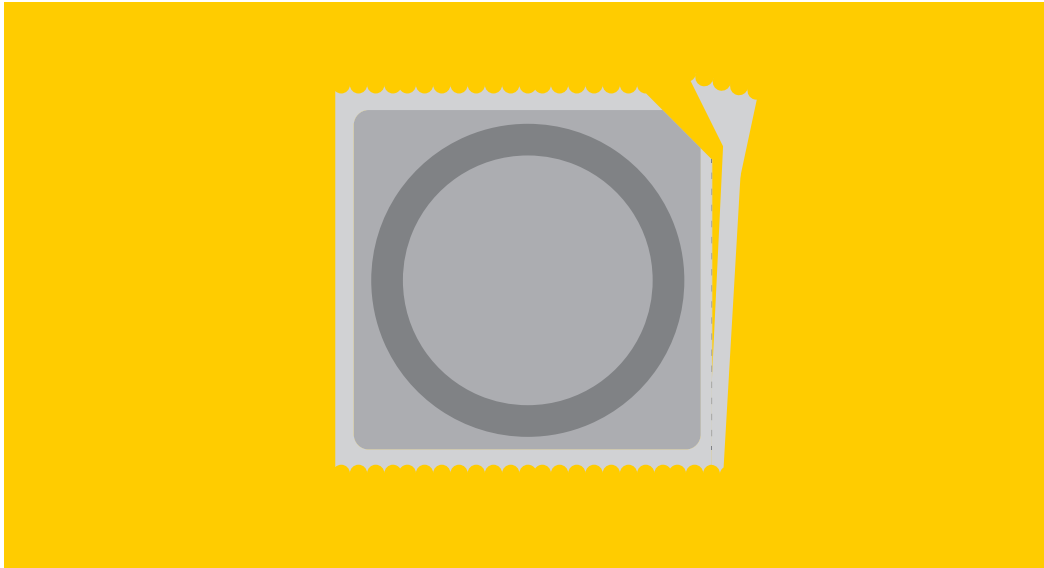
**CONSENT FROM PARTNER**

**WHY IS CONSENT IMPORTANT?**



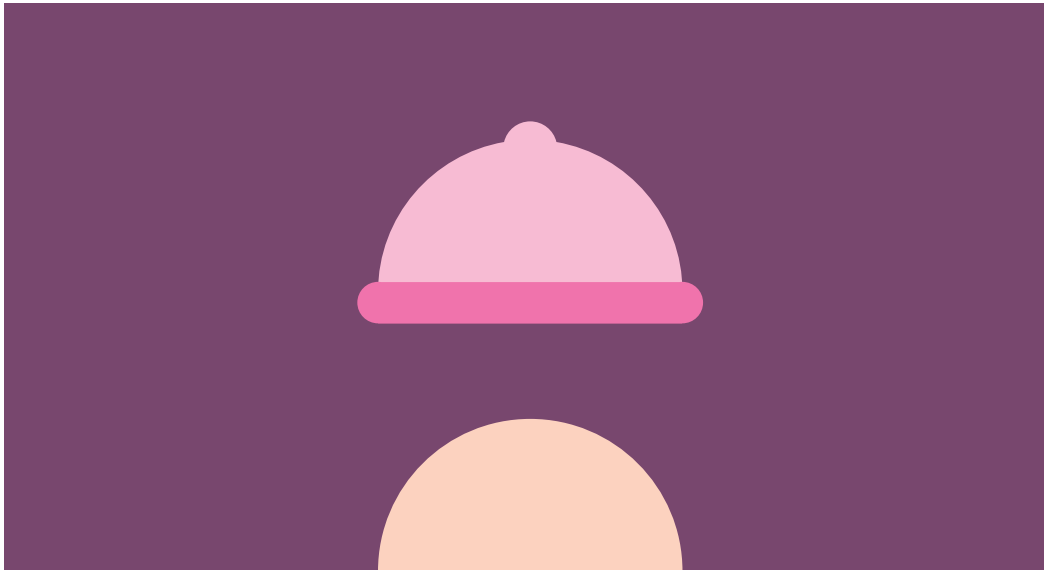
**CHECK THE EXPIRY DATE**

**WHAT CAN HAPPEN IF  
A CONDOM HAS EXPIRED?**



**OPEN THE CONDOM PACKET CAREFULLY  
AND REMOVE CONDOM**

**WHY BE CAREFUL WHEN OPENING  
A CONDOM PACKET?**



**CHECK CONDOM IS AROUND THE  
RIGHT WAY FOR UNROLLING**

**WHICH WAY IS THE RIGHT WAY?**

**WHAT SHOULD YOU DO IF YOU PUT  
A CONDOM ON THE WRONG WAY?**





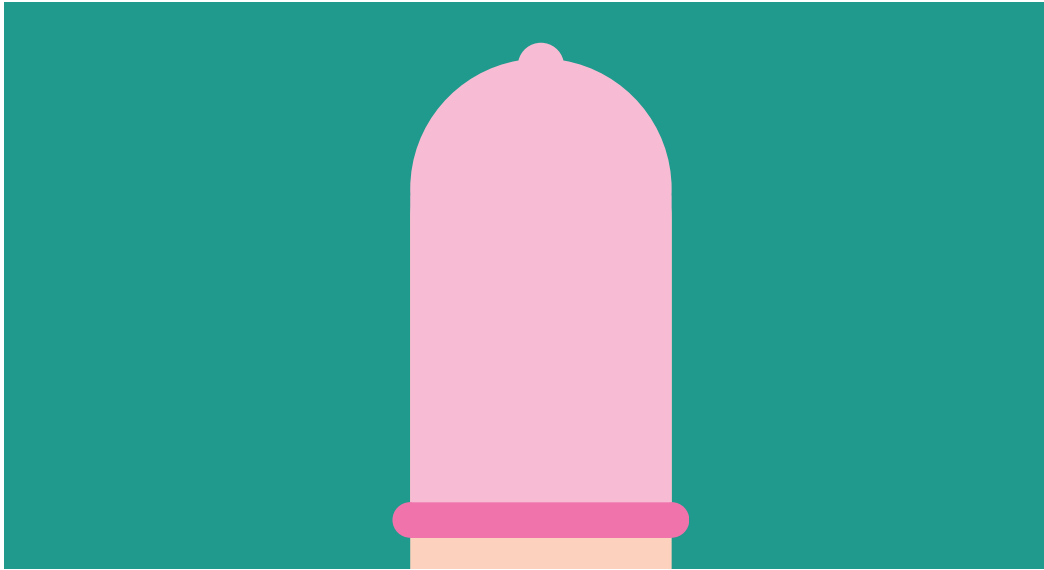
**SQUEEZE TIP OF CONDOM TO REMOVE AIR**

**WHY IS IT IMPORTANT TO REMOVE  
AIR FROM THE CONDOM?**



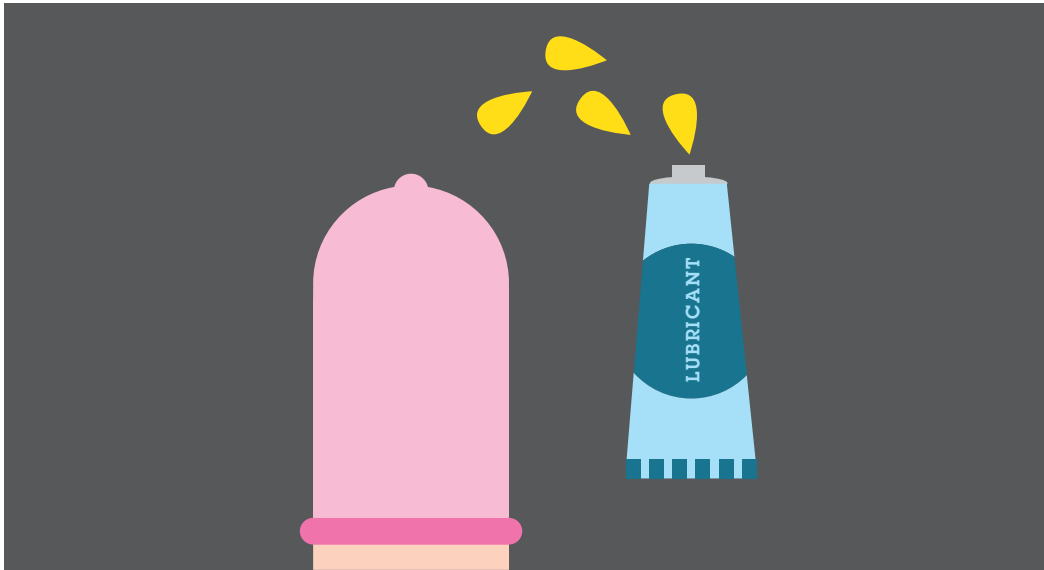
**WHILE HOLDING THE TIP,  
PLACE CONDOM ON TOP OF PENIS/TOY/ETC**





**ROLL CONDOM DOWN THE ENTIRE  
LENGTH OF PENIS/TOY/ETC**

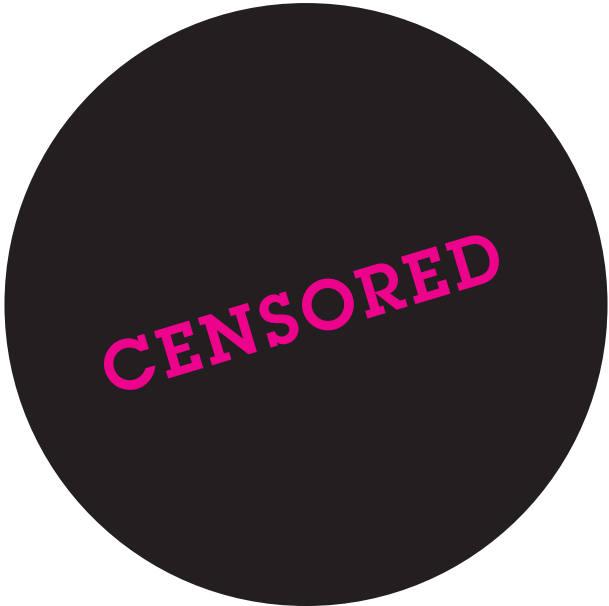




**APPLY WATER BASED LUBRICANT**

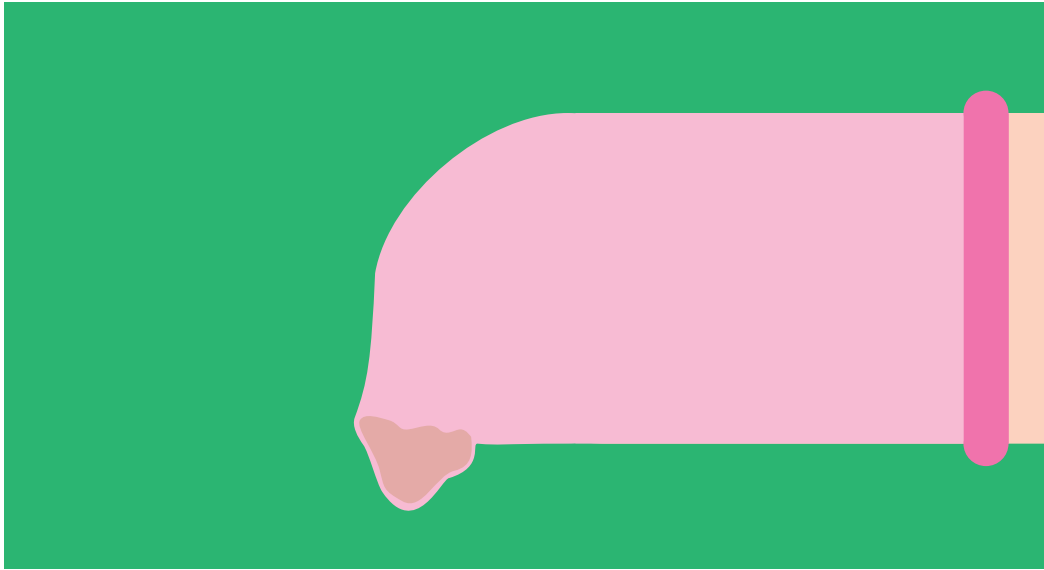
**HOW CAN LUBRICANT HELP?**





**SEXY TIMES**





**HOLD BASE OF CONDOM  
WHILE WITHDRAWING**

**WHY IS IT IMPORTANT TO HOLD  
THE BASE OF THE CONDOM?**

**IF THE CONDOM HAS EJACULATE  
IN IT, WHAT SHOULD WE  
BE CAREFUL ABOUT?**



**REMOVE THE CONDOM,  
TIE A KNOT IN IT AND PUT IT IN THE BIN**

**WHY PUT A CONDOM IN A BIN?  
(AND NOT IN THE TOILET!!!)**